



THE CCL CONGRESS CENTER LEIPZIG



THE CCL: SPACIOUS. MODULAR. FLEXIBLE.

The Congress Center Leipzig is part of the Leipzig Exhibition and Convention Centre which was opened in 1996, and it forms the core of a modular concept of use. It can be used individually or, for large-scale events, in combination with the adjacent Hall 2, the spectacular Glass Hall, and the Meeting Area Messehaus.

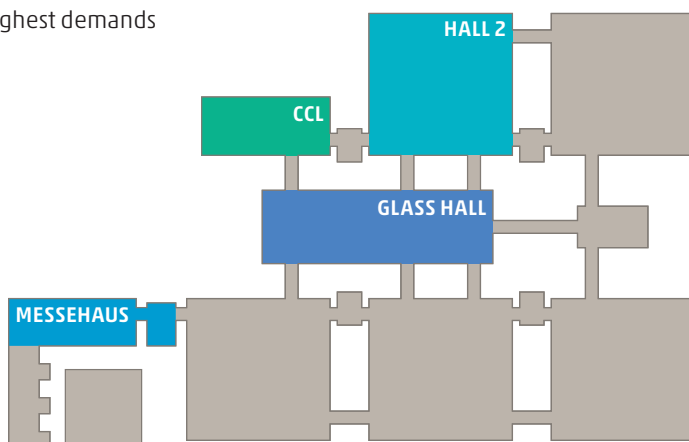
TECHNICAL EQUIPMENT IN THE CCL

The conferencing, media and telecommunications technology at Congress Center Leipzig is state of the art and fulfills the highest demands in a flexible way. The technical crew makes sure that your event runs smoothly and is your partner for designing tailor-made technical solutions.

The CCL offers you optimum IT solutions for presentations, networking, meeting facilities, exhibition booths, Internet Cafés, and registration.

Our equipment and services include:

- modern data network for complex IT and multimedia solutions
- separate IPTV network including the option of putting in multiple customer-specific IPTV signals
- full WiFi coverage throughout the building
- digital signage by networkbased display system
- modern image, light and sound control systems
- professional sound and PA systems for best speech intelligibility and sound quality
- powerful video/data projectors for display of all common video and PC standards
- camera systems, also for projection of speakers' image and recordings
- fixed and mobile conference systems, translation booths and simultaneous translation
- transmission systems for the hard of hearing
- large pool of technical equipment for highest demands and individual solutions



Top left: Leipziger Messe Exhibition Centre, west view

Top right: CCL, west view

Bottom left: Lake view with CCL and Glass Hall

Bottom right: Detail: western front of the CCL in spring



THE ROOM CONCEPT: CLEAR STRUCTURES. SHORT DISTANCES.

The CCL is set in a park landscape and combines exciting architecture and artistic design with state-of-the-art multimedia and telecommunication technology. The building features 23 rooms, among these a large hall for over 1,000 people, furthermore spacious foyers, and areas for versatile use.

FACILITIES IN THE CCL

Architectural beauty and high quality ambience, together with fully developed functionality, are the trademarks of the CCL building. At the same time it features a very clear and compact structure which makes orientation through-out the building extremely easy. The rooms and spaces of the CCL are spread over four levels.

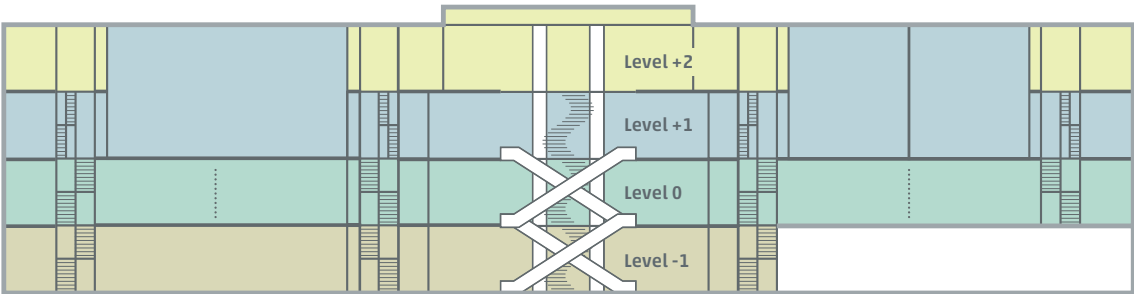
Level -1 is the entrance level with the registration area and cloakrooms, a spacious atrium and attractive lounges.

Level 0 features four multi-purpose areas which can be combined so as to create two large spaces. According to the needs of an event, they can be used for exhibitions, as catering zones, or as meeting facilities. Furthermore, there are four banquet rooms on this level.

Level +1 is the level of the large meeting halls, including the largest one for a maximum of 1,196 people in theatre-style seating, furthermore two halls for 380 people each, two halls for 180 people each, and spacious foyer areas in front of the halls which can be used for exhibitions and catering.

Level +2 completes the variety of facilities with 10 seminar and lecture rooms of different sizes, offering space for 21 to 100 people in theatre-style seating.

Top:
The light-flooded, spacious Atrium forms the central part of the CCL building.





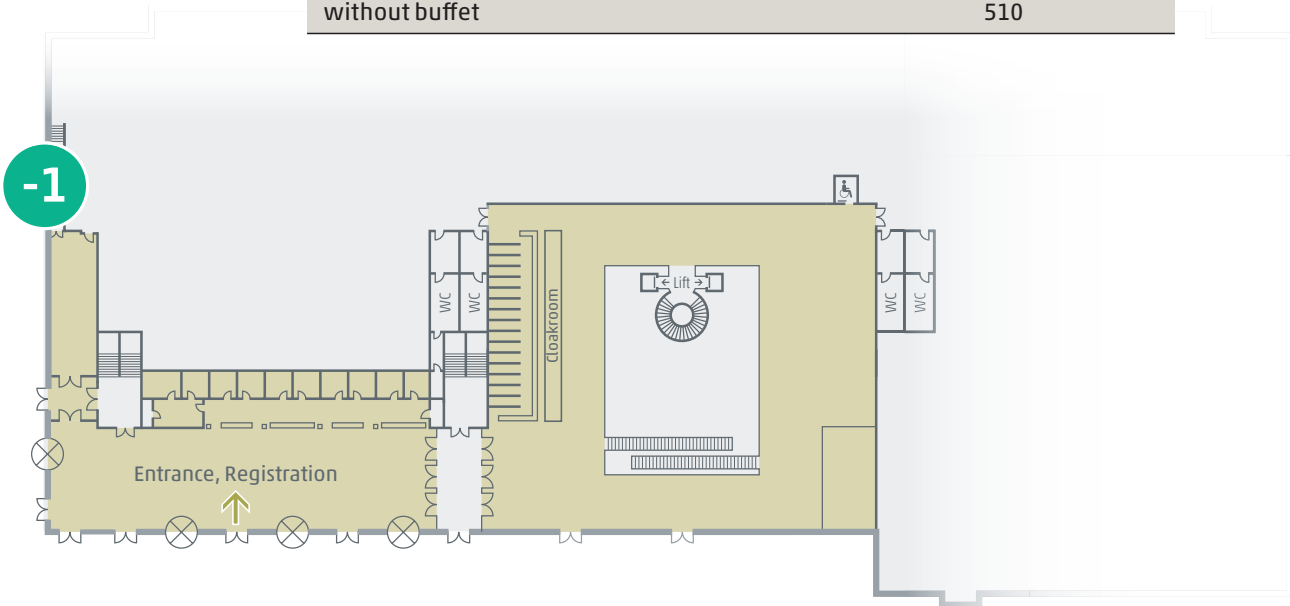
LEVEL -1: ENTRANCE LEVEL

With registration area and cloakrooms. The spacious atrium features attractive lounge areas and may also be used for impressive evening functions.

In the entrance area, 18 counters are available for registration and information. Behind these counters there are 9 storage rooms of 8.32 m² each, and the Atrium contains cloakrooms and a luggage service. The central Atrium extends over all four levels of the building, which can be accessed through 2 escalators, 2 lifts, and a flight of winding stairs. The Atrium can set an impressive scene for social evening functions involving up to 510 people.

- Top left:**
Registration desk in the entrance area
- Top right:**
Escalator and lake from above
- Bottom left:**
Atrium seating area
- Bottom right:**
Atrium workstations

ROOM	CAPACITY seating style BANQUET
with buffet	410
without buffet	510





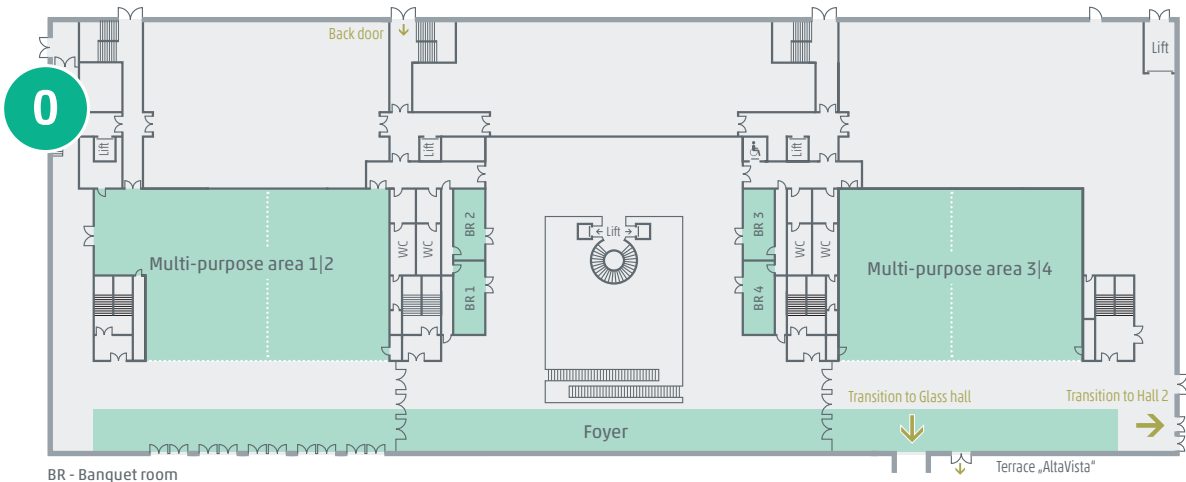
LEVEL 0: MULTI-PURPOSE LEVEL

The spacious Multi-purpose Areas can be used flexibly – individually or in combination – for exhibitions, presentations, catering purposes, or as meeting rooms. Moreover, four Banquet Rooms are available on this level.

ROOM	SURFACE in m²	HEIGHT in m	CAPACITY seating style		
			THEATRE	CLASSROOM	BANQUET
Multi-purpose area 1	332	3.20	171	80	90
Multi-purpose area 2	370	3.20	266	126	150
Multi-purpose area 3	370	3.20	266	126	150
Multi-purpose area 4	266	3.20	171	80	90
Multi-purpose area 1/2 incl. Foyer	1,408	3.20	513	210	740
Multi-purpose area 3/4 incl. Foyer	1,186	3.20	513	210	640
Banquet room 1, 2, 3, 4	each 36	3.00	30	16	20

Top left: Banquet room
Top right: Exhibition in Multi-purpose Area 3/4
Bottom left: Catering in Multi-purpose Area 3/4
Bottom right: Theatre-style seating in Multi-purpose Area 3/4

Total exhibition space on Level 0: 2,790 m² gross





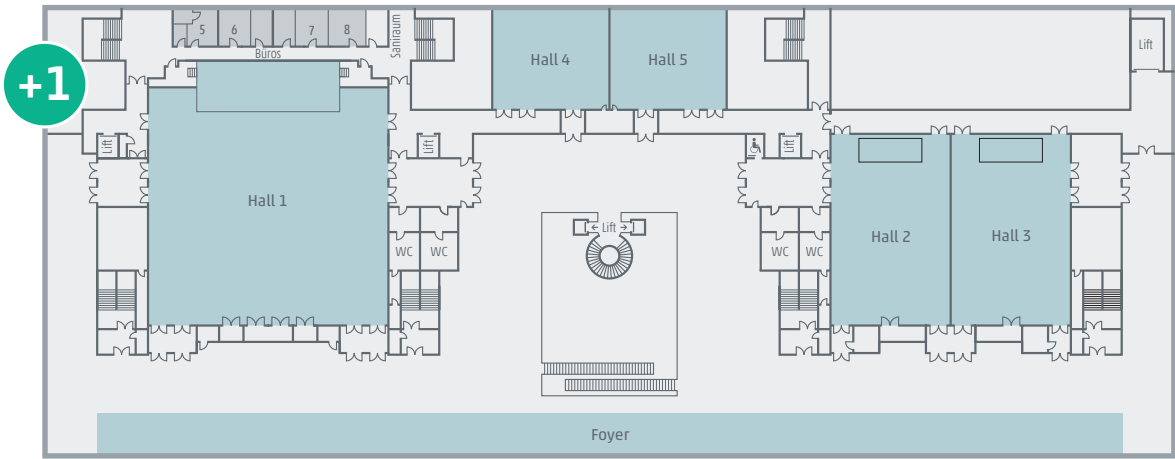
LEVEL +1: CONFERENCE LEVEL

Five meeting halls are located on this level which covers a total surface of 2,196 m², among them Hall 1 which offers space for up to 1,196 people. Other facilities are Halls 2 and 3 for 380 people each, and Halls 4 and 5 for 180 people each. The spacious, light-flooded foyer areas in front of the halls are well suited to accommodate exhibitions and catering zones.

ROOM	SURFACE in m ²	HEIGHT in m	CAPACITY seating style		
			THEATRE	CLASSROOM	BANQUET
Hall 1 (with forestage)	1,048	10.68	1,008	540	540
Hall 1 (without forestage)	1,048	10.68	1,196	612	640
Hall 2	384	10.68	380	168	180
Hall 3	384	10.68	380	168	180
Hall 4	190	3.82	180	84	110
Hall 5	190	3.82	180	84	110

- Top left:**
Exhibition in the foyer outside Halls 2 and 3
- Top right:**
Forum in Hall 1
- Bottom left:**
Hall 1 in theatre-style seating
- Bottom right:**
Hall 3 in classroom seating

Meeting rooms 5, 6, 7, 8 behind Hall 1: from 18m ² to 28m ²
Total exhibition space on Level +1: 2,820 m ² gross





LEVEL +2: CONFERENCE LEVEL

Ten seminar and lecture rooms of different sizes offer space for 21 to 100 people and can partly be used in combination.

ROOM	SURFACE in m ²	HEIGHT in m	CAPACITY seating style		
			THEATRE	CLASSROOM	BANQUET
Seminar room 6, 7	each 33	3.00	21	16	10
Seminar room 6+7	66	3.00	63	42	30
Seminar room 8, 13	each 33	3.00	21	16	10
Lecture room 9, 12	each 47	3.25	38	30	20
Lecture room 10, 11	each 125	3.25	100	54	60
Seminar room 14, 15	each 33	3.00	21	16	10
Seminar room 14+15	66	3.00	63	42	30

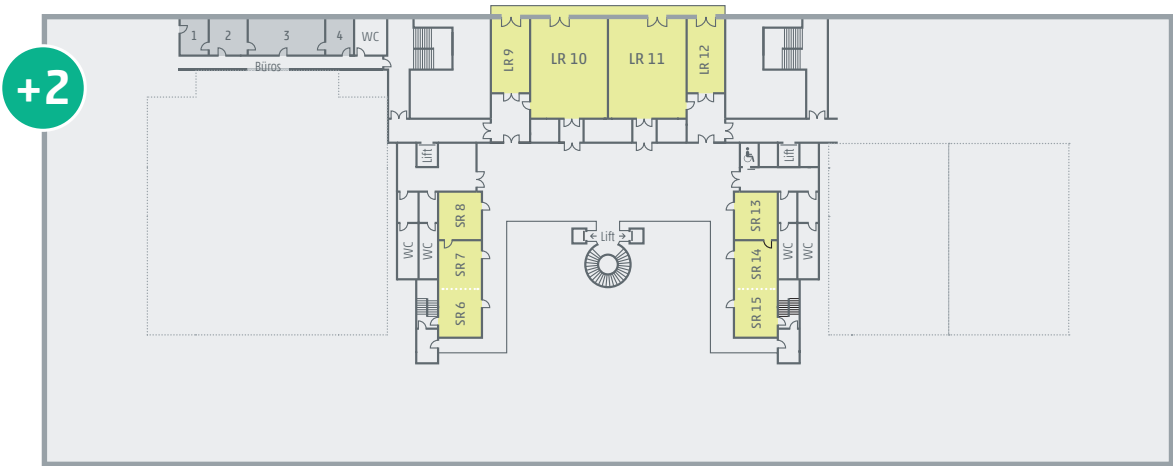
Office room 1, 2, 3, 4: from 17 m² to 47 m²

Top left:
Block of tables in Lecture Room 12

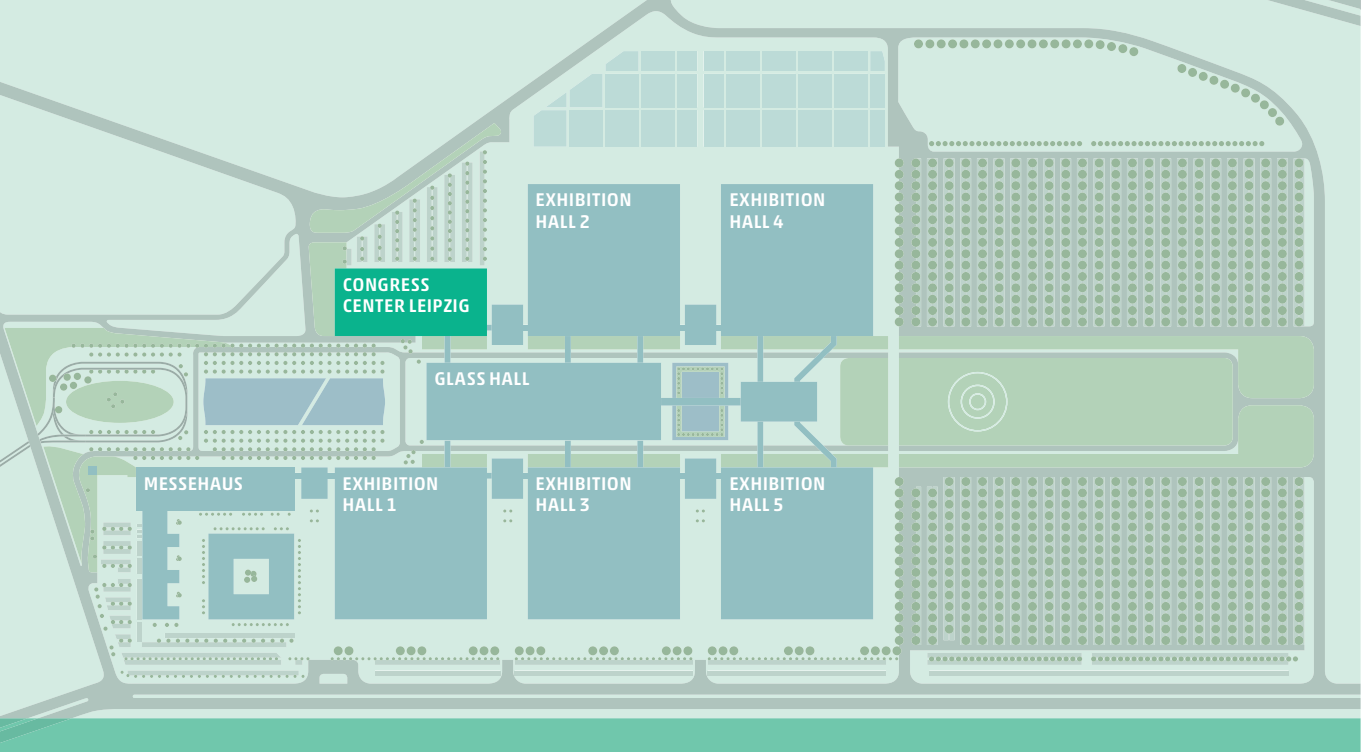
Top right:
Foyer Level +2

Bottom left:
Seminar Room 6

Bottom right:
Lecture Room 11 in theatre-style seating



LR - Lecture Room | SR - Seminar Room



A VENUE OF
LEIPZIGER MESSE

Leipziger Messe GmbH / Congress Center Leipzig

Messe-Allee 1, 04356 Leipzig

Tel.: +49 341 678-8440

info@ccl-leipzig.de, www.ccl-leipzig.de